

CERTIFICATE OF LOCATION OF GOVERNMENT CORNER

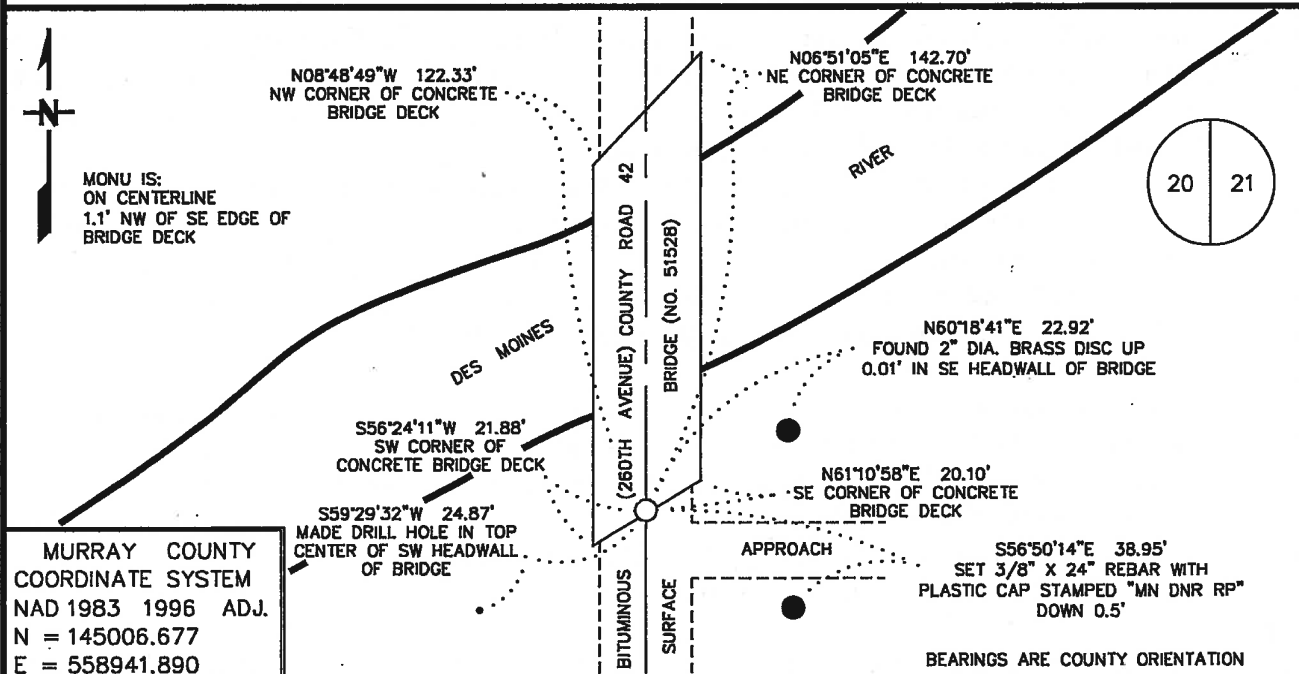
EAST QUARTER Corner of Section 20, Township 106 N, Range 39 W
5TH Principal Meridian, State of Minnesota, County of MURRAY

At the corner location shown on the sketch:

On _____ found a _____
DATE

left monument as found, lowered monument, removed monument (explain)

On 1/31/17 Placed a MAG NAIL, FLUSH ON BRIDGE DECK
DATE



Statement of evidence for this corner location is on back of this page.

FEBRUARY 2017
WMA00384

I hereby certify that this plan, specification, or report was prepared by me or under my direct supervision and that I am a duly Licensed Land Surveyor under the laws of the State of Minnesota.

SIGNATURE Bruce W. Shepherd DATE 3/23/17 License Number 17003
BRUCE W. SHEPHERD

The DNR Division of Lands and Minerals contacted the following for survey information:

Website - mngeo.state.mn.us
Website - murray-countymn.com
Murray County Recorder's Office
Bueltel-Moseng Land Surveying, Inc. of Marshall
Zieske Land Surveying Inc. of Windom
Madsen Land Surveying Inc. of Fairmont
Widseth, Smith, Nolting and Associates, Inc. of Alexandria
United States Department of the Interior Fish and Wildlife Service

- 1861 U.S. General Land Office notes, obtained from mngeo.state.mn.us, show the corner marked with a post and a charred stake in a raised mound with trench and pits as per instructions.
- 1908 Plat Books for Des Moines River Township, obtained from the County Recorder's Office,
1926 show property divisions north-south-east-west in the area of the corner.
- 1934 A Surveyor's Record Book page that shows Section 20, T106N, R39W, obtained from murray-countymn.com, shows a stone at the corner but does not indicate if it was found or set. The following ties are shown to the corner:
R.P. first rivet west on southeast corner of wheel guard of bridge south side, 26.3 feet
R.P. first rivet east on southwest corner of wheel guard, 26.2 feet
- 1961 January, field notes for a survey in the NW¼ of Section 20, T106N, R39W, by the Department of Conservation, in the possession of the DNR Division of Lands and Minerals, states that a railroad spike was placed at the corner on the center line of a Township Road per ties from County Engineer. The following ties are shown to the corner:
first rivet west on southeast corner of wheel guard of bridge, northeast, 26.21 feet
first rivet east on southwest corner of wheel guard of bridge, northwest, 26.20 feet
The corner is shown:
2651.2 feet from the northeast corner of Section 20
5370.5 feet from the west quarter corner of Section 20
- The field notes shown that a transit was set up at the west quarter corner of Section 20 and the east quarter of Section 20 was sighted directly and then an I.P. was set on this line at the intersection of fences north, south, east for the center of Section 20. The I.P. set for the center of Section 20 is shown:
2669.0 feet from the west quarter corner of Section 20
2662.5 feet from the north quarter corner of Section 20
- 1965 February, field notes and map for a survey in the SW¼ of Section 20, T106N, R39W, by the Department of Conservation, in the possession of the DNR Division of Lands and Minerals, states that the I.P. set for the center of Section 20 in the 1961 survey was found at the corner. The I.P. is shown:
2669.0 feet from the west quarter corner of Section 20
2662.5 feet from the north quarter corner of Section 20

East Quarter Corner of Section 20, Township 106 North, Range 39 West
Page 2 of 2

1972 March 24, A Surveyor's Record Book page that shows Section 20, T106N, R39W, obtained from murray-countymn.com, states the following about the corner:

"Hole 5 feet deep was dug with backhoe. No Stone located. Placed 10 inch steel fence post."

The following ties are shown to the corner:

R.P. first rivet west on southeast corner of wheel guard of bridge south side, 26.2 feet

R.P. first rivet east on southwest corner of wheel guard of bridge south side, 26.2 feet

No Construction Plan Sheet 6 of 36 for CSAH No 42, obtained from the County Highway
Date Department, shows an assumed location for the corner. The corner is shown:

at Station 290+42.40

on line between adjoining section corners

2657.10 feet from the southeast corner of Section 20

2650.20 feet from the northeast corner of Section 20

2001 A topographic CADD drawing for the construction of a new bridge over the Des Moines River, along with an email, obtained from Widseth, Smith, Nolting and Associates, Inc. states that a PK nail was found at the corner. The corner is shown:

2653.83 feet from the northeast corner of Section 20

2016 November 2, the DNR Division of Lands and Minerals visited the area of the corner and found that a new bridge has been constructed, thus the record ties to the corner are gone. Further investigation revealed that the corner location is on the current bridge deck. Then a position for the corner was computed as follows:

a) on line between adjoining section corners

b) on the easterly extension of a line from the west quarter corner of Section 20 thru an iron pipe found in the area of the center of Section 20

The computed position for the quarter corner was found to be:

2651.50 feet from the northeast corner of Section 20

2655.43 feet from the southeast corner of Section 20

5369.23 feet from the west quarter corner of Section 20

2701.34 feet from the iron pipe found in the area of the center of Section 20

Analysis of the above information led the DNR Division of Lands and Minerals to conclude that the computed position for the corner marks the best available evidence of the location of the corner. The PK nail (unrecorded monument) found by Widseth, Smith, Nolting and Associates, Inc. at the quarter corner was disregarded as marking the location of the corner because no information could be found on how and why it was set. Furthermore, the distance from the PK nail to the northeast corner of Section 20 is 2.63 feet, 3.63 feet and 2.33 feet longer than the 1961, County Highway and 2016 distances respectively.

A ¼ inch diameter hole was drilled in the bridge deck and then a MAG nail was set in the hole and ties were taken to it as shown on the sketch of reference ties.